



Shelterwood

Life Change Happens Here



“Our daughter is more present, engaging, and trustworthy today. It was the hardest, but best decision sending her to Shelterwood.”

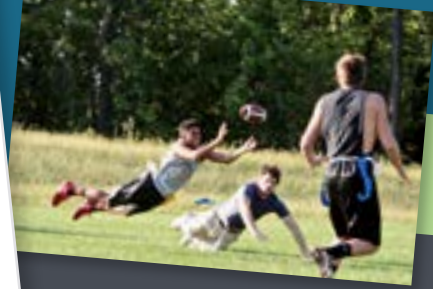
— PARENT OF 2020 GRADUATE

Changing Young Lives, One Heart at a Time.





3205 N. Twyman Road | Independence, MO 64058
shelterwood.org | 816.249.5350



Dear Friend of Shelterwood,

There's a good chance if you're reading this you've heard a Richard Beach story. Perhaps you knew about his tremendous heart for teens and his life of loving them like Jesus. Maybe you were influenced by one of the many people he reached. Perhaps you, like me, were personally impacted by Richard's life of discipleship and evangelism.

I was in my late 20s when the Lord used Richard to bring me to Christ at a Family Weekend at Shelterwood. Jesus changed my life that weekend – and I was never the same. This is the miraculous change we long to see in every family and teen who encounters Shelterwood.

Our mission remains the same at Shelterwood as it was 40 years ago when Richard founded the ministry. We exist to transform the lives of teens and restore families. Shelterwood therapists, teachers, mentors, and administrative staff walk with our teens on the path to wholeness. Our interactions are life-on-life, 24/7. And like Richard, we love them with the unconditional love of Jesus.

2020 has been a difficult year. You have likely been reminded time and time again that many things in life that seemed constant are not. But one thing, you can be confident remains constant: the Lord is at work and he changes lives. I am thankful to see this daily at Shelterwood.

I hope you find encouragement as you read these stories of transformation. It's your partnership that makes this all possible. I look forward to seeing God continue to use your prayers and financial gifts to bring hope to hurting teens and families in the coming year.

With Much Love and Appreciation,



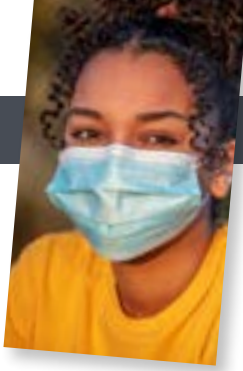
Jim Marvine
Jim Marvine
President & CEO



SHELTERWOOD IS
a residential treatment
community of Christ
followers called to
meet the needs of
teens in crisis and
help families heal.

*We love
because
He first
loved us.*

– 1 JOHN 4:19



2020 ACCOMPLISHMENTS

Despite a worldwide pandemic and the ensuing financial hardship facing many non-profit and for-profit small businesses in the U.S., Shelterwood has much to be grateful for this last year. God's faithfulness, as well as your prayers and giving heart, provided us with many blessings worth celebrating in 2020.

Some of the highlights from our 40th year of ministry follow:

- Starting the fiscal year by receiving **The Joint Commission's Gold Seal of Approval® for Behavioral Health Care Accreditation** – a designation achieved by less than 2,000 behavioral health facilities nationwide.
- Increasing our donations and financial giving five-fold over the previous year.
- Reducing our non-program expenses by over \$440,000 (26% less) while making much needed investments in our facilities and campus infrastructure.
- Applied for and received funds through the government's Paycheck Protection Program (PPP) to minimize impact on our staffing, allowing us to maintain a high level of therapeutic and behavioral care.



- Navigating local and state-mandated regulations and quarantines, periodic COVID-19 infections of staff and students, and a necessary increase in monthly fees to finish the year serving 70 teens and families.
- Launching a brand refresh and targeted digital marketing effort that has dramatically and measurably increased the number of qualified parent inquiries we receive.
- Developing the Richard Beach Memorial Scholarship fund to assist struggling families with the costs of residential treatment for their sons or daughters, especially pertinent during the financial struggles brought on by the COVID-19 pandemic.

People Served

- 70** Number of teens we served in 2020
- 90** Mentor disciples trained to serve our teens
- 25** Number of states these teens came from
- 2** Countries represented other than the United States (China and Saudi Arabia)

"We feel like a family unit and take steps to keep those feelings secure. It's a place we all longed to be, and we are thankful for it."

– PARENT OF RECENT GRADUATE





“We had a boy with so much to offer, so much life to live but was giving it all away through struggles with past trauma, depression and anxiety. As devastated, disillusioned, and crushed as we felt as parents to turn him over to Shelterwood to care for him, we were willing to risk him hating us if it meant he could find his way.”

*Today our son is more self-aware, mature, and ready to find a way for himself. He is in his second year of college and relies on his faith, friends, and family who have stood by him. He is committed to pursuing his best self, serving others in community, and finding joy. We recognize it is not always easy, but he chooses to use the tools he learned at Shelterwood, keep choosing to find his way, and not give up. We are so proud of him and so **thankful for his life restored.**”*

– PARENT OF RECENT TEEN GRADUATE

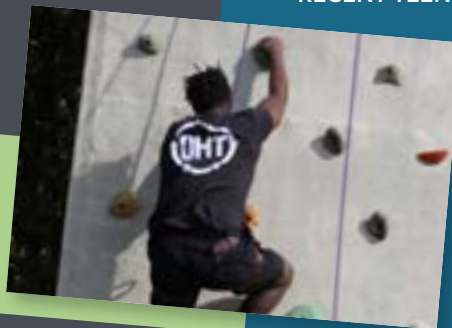
“I was really depressed and suicidal when I first got to Shelterwood. My mom had passed just two years prior to my arrival and I was still grieving her death. At first, I didn’t like the therapist they assigned me. But soon, I grew to trust her and told her everything so I could get help. I loved most of the mentors and staff members too. They all really helped me get through the hard times and helped me make friends and have fun, even when I didn’t want to. If I can sum up Shelterwood in three words it would be: helpful, Christ-centered and great!”

After graduating from Shelterwood in October 2019, I took a gap year and worked so I could earn money to attend a nearby private Christian college. I am now enrolled and majoring in psychology so one day I can help others like Shelterwood helped me!”

– RECENT TEEN GRADUATE

SHELTERWOOD PROVIDES

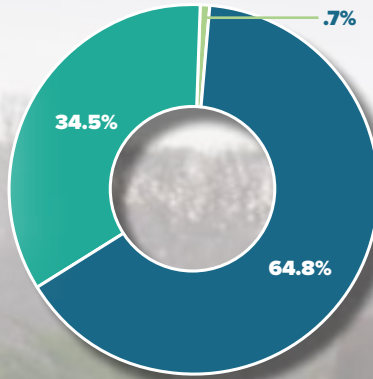
healthy relationships, excellent therapeutic and academic support, and a safe and caring environment for teens to learn, grow, and thrive.



FINANCIAL STEWARDSHIP

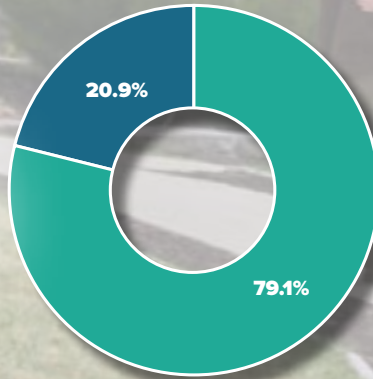
FISCAL YEAR INCOME

Donation Revenue	\$6,254,262
Fee Revenue	\$3,326,016
Other Income	\$65,667
TOTAL	\$9,645,945



FISCAL YEAR EXPENSES

Administration	\$1,280,643
Programs	\$4,836,073
TOTAL	\$6,116,716



OUR BOARD

BOARD MEMBERS

In 2020 we added more than 125 years of business, non-profit, and management experience to our Board of Directors.

INTERIM BOARD CHAIRMAN

Brian Beach

Owner, JCB Tree Service

Doug Anderson

Hallmark *(retired)*

Kathy Hirleman

Kansas City Christian School *(retired)*

Steve Lampone

Kansas City Parks and Recreation *(retired)*

Jim Marvine

Shelterwood President and CEO

Al Smith

General Partner, Bottomline Profits

FINANCIAL ACCREDITATIONS



Founded in 1979, the Evangelical Council for Financial Accountability (ECFA) provides accreditation to leading Christian nonprofit organizations that faithfully demonstrate compliance with established standards for financial accountability, transparency, fundraising and board governance. Shelterwood has been a member since (year).



Excellence in Giving is a full-service philanthropic advisory firm designed to increase the joy of the high-capacity donor through a personalized process of discovery, evaluation, participation, and celebration. To earn this Transparency Seal, Shelterwood has disclosed key performance data that far exceed IRS, BBB, or Guidestar standards.

We brought our daughter to Shelterwood after several months of extreme family tension, not just between her and my husband and I, but with her siblings. We felt defeated, scared, and anxious. We were all exhausted and knew change had to occur before she turned 18.

Since returning home, our daughter is more conscientious of others' feelings. She values, appreciates, and respects her family more. When conflict arises, she now handles it more rationally. Her relationship with her siblings, especially her brother, is much better. In fact, she enjoys time just hanging out with us, which hadn't happened in years.

Our daughter has acclimated well to home life even during the COVID-19 pandemic. She has worked for a local cleaning company and nannied three young girls over the summer while taking two college courses at a Community College. Today she attends the college virtually and has expressed an interest in a career in mental health and pursuing a CNA/LPN certification.

— PARENT OF RECENT TEEN GRADUATE



SCAN AND
GIVE NOW

THE SHELTERWOOD CAMPUS

is located on 220 acres just outside Kansas City. To arrange a campus visit, or to learn more about Shelterwood, call **816.249.5357** or visit **shelterwood.org**.



Shelterwood



Designated as a NATSAP
Gold Seal Recipient for
Evidence-based Outcomes



Cognia provides an explicit set of
standards and criteria for school
accreditation and certification.

3205 N. Twyman Road | Independence, MO 64058 | 816.249.5350 | shelterwood.org